

BLAKECOMMS
Internet | Design | Hosting

Setting up Email in Mail 2.1

Blake Comms

Telephone: 01258 690048

Email: info@blakecomms.co.uk

Website: www.blakecomms.co.uk



© Copyright Blake Comms 2010

Page 1 of 4

Setting up Mail (for Mac OS X)

To configure email accounts in Mail 2.1 please follow these simple step-by-step instructions.

Step 1

Go to the top menu 'file' and click on the link 'add account'.

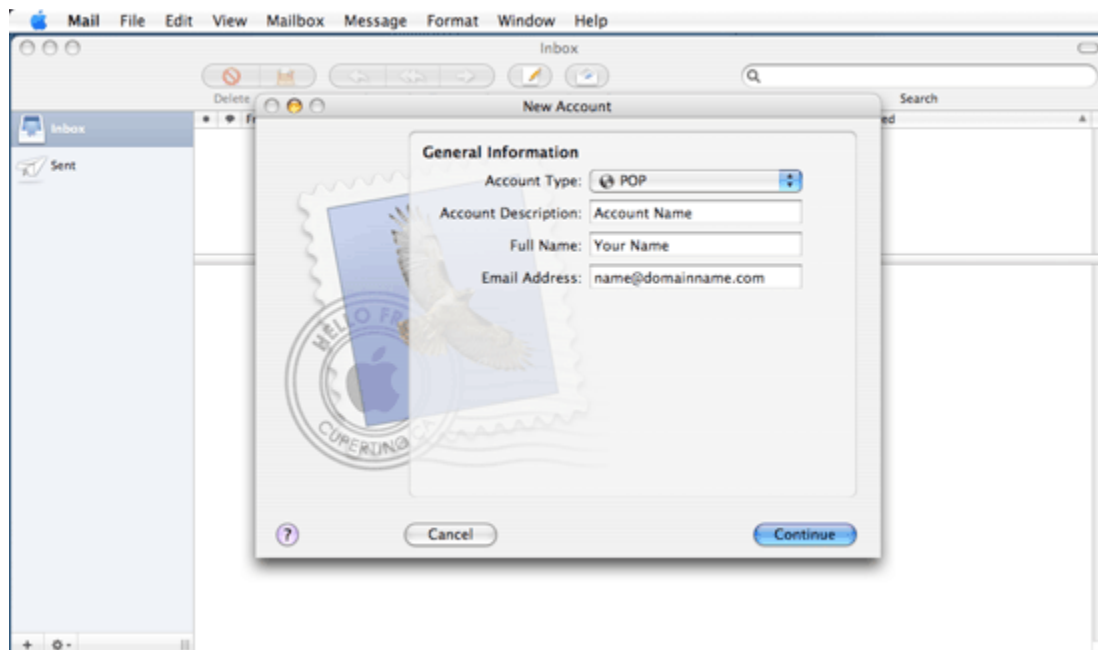
Step 2

Select the Account Type as 'POP'

The account description can be anything that will aid you identify the account at a later date.

Full Name should be your name, or how you want recipients to see your emails (eg Support).

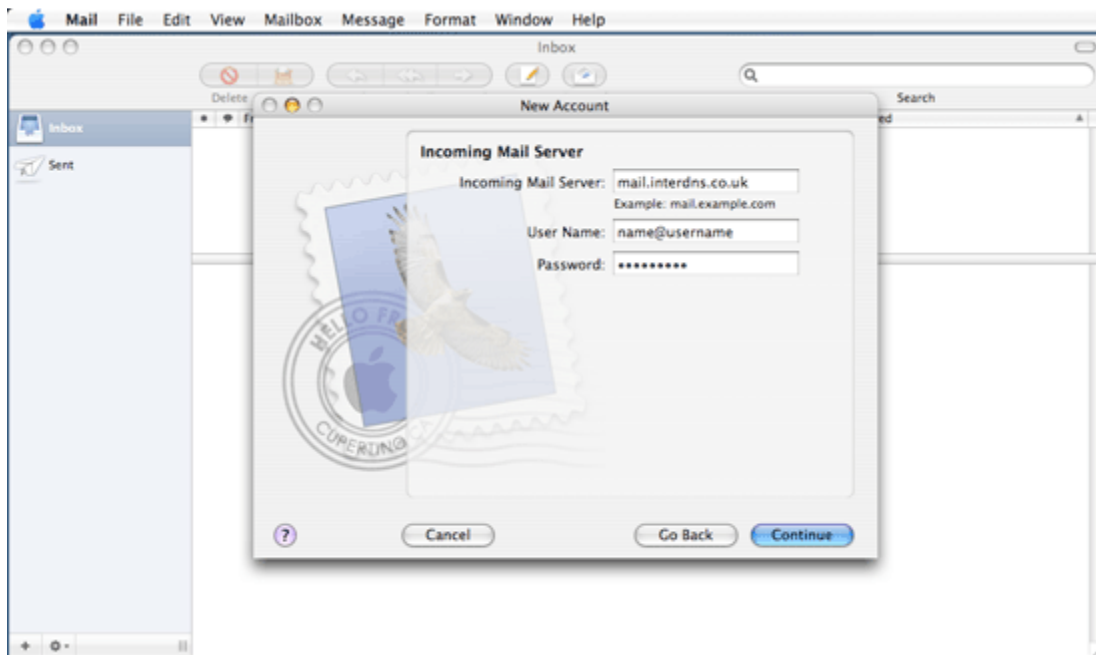
Lastly enter your full email address.



Step 3

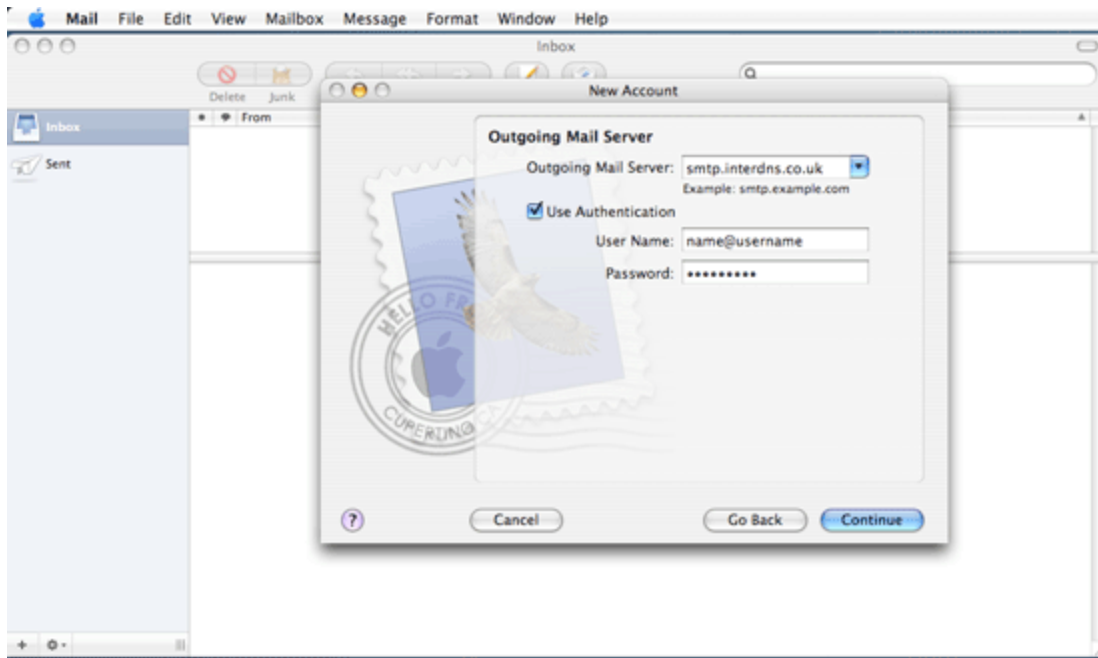
Enter your incoming server as 'mail.interdns.co.uk'

Enter your account username and password for the mailbox you are working with. You need to make sure that this has been created in your control panel first, and will take the form of myname@username (eg for the address joe@joebloggs.com with the username of joebloggs it would look something like joe@joebloggs, but full confirmation can be found in your control panel in the mailbox section).



Step 4

Enter your outgoing server as 'smtp.interdns.co.uk'. Authentication is required when sending through our servers. You should tick the authentication box, and enter the username and password of your mailbox as per the previous step.



Finish

Follow through the rest of the steps. There are no more details to enter.